



UNIVERSITY OF LEEDS

Reach for Excellence

Contextual Outreach Team

THE
CONTEXTUAL
OUTREACH
TEAM



- To help you progress to the university of your choice
- To help raise your aspirations and A Level attainment
- Assist with your application to university
- To increase individual confidence and self-esteem
- To give you non biased advice and guidance
- To ease the transition into higher education



How do we do it?



UNIVERSITY OF LEEDS

- Subject specific sessions to give you an idea of what is on offer at university
- Study skills sessions
- Sessions for parents
- Summer school



THE CONTEXTUAL OUTREACH TEAM



How do we do it?



UNIVERSITY OF LEEDS

- Impartial advice about applying to university
- One to one personal statement sessions
- Finance advice and guidance
- Online support with monthly chat sessions

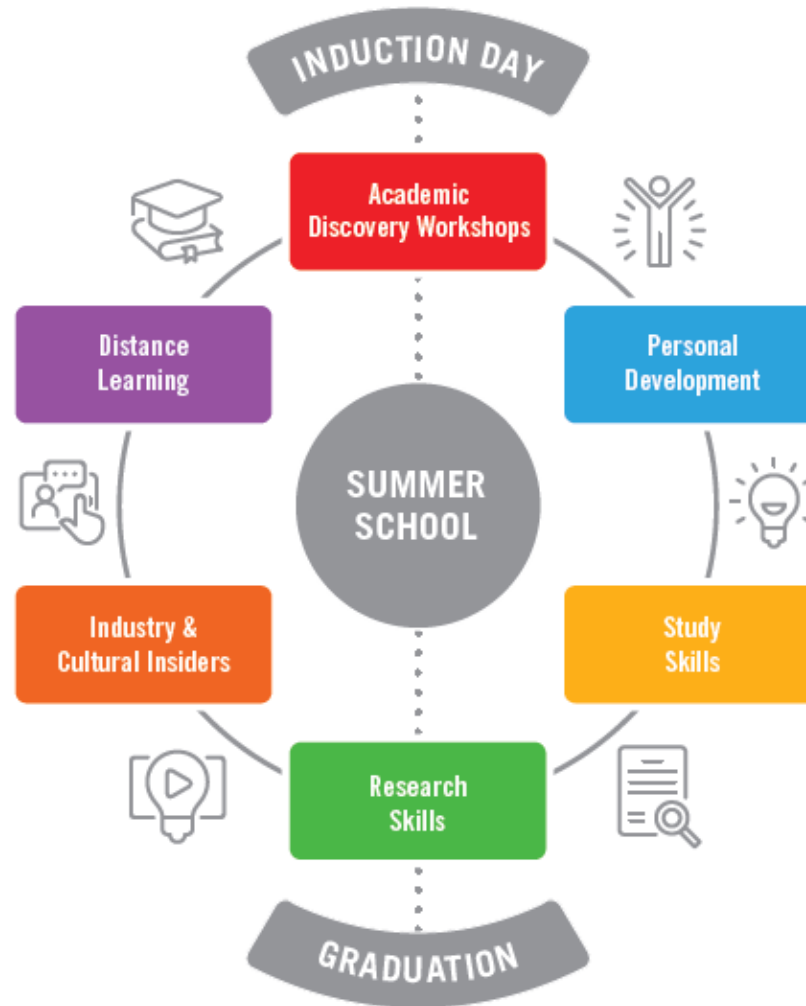
THE CONTEXTUAL OUTREACH TEAM



Programme Structure



UNIVERSITY OF LEEDS



What else do I need to know?



UNIVERSITY OF LEEDS

- School holidays and after school sessions, no disruption to your studies
- Travel expenses reimbursed for every session you attend
- Requires a commitment from you

THE CONTEXTUAL OUTREACH TEAM



Why should I get involved?



UNIVERSITY OF LEEDS

- Meet new people
- Try new things and find out what is available at uni
- Established Programme – 17th Cohort
- More likely to enter HE
- More prepared for university



THE CONTEXTUAL OUTREACH TEAM



Reach for Excellence students are eligible to transfer onto Access to Leeds in Year 13 without having to apply directly to A2L

If applicants are successful, they will receive a standard offer and alternative offer

Example for Sociology – ABB or BBC with a pass in A2L module

To remain eligible for the A2L offer you must

- Complete A2L module
- Make the University of Leeds your firm choice via UCAS





UNIVERSITY OF LEEDS



THE CONTEXTUAL OUTREACH TEAM





UNIVERSITY OF LEEDS



THE CONTEXTUAL OUTREACH TEAM





UNIVERSITY OF LEEDS



THE CONTEXTUAL OUTREACH TEAM





To be eligible for Reach for Excellence, you must:

- Be a current Year 12 student.
- Have gained 5 or more GCSEs at grades 9-4, including Mathematics and English Language.
- Have the potential to achieve at least 3 A Levels at grade B or above (or equivalent qualifications), and to progress to further study at a research-intensive university.
- Live within a reasonable distance to the University of Leeds and be able to attend regular events on campus during the school holidays.



You will also need to meet at least **two** of the following criteria to be eligible for the scheme:

- Be in the first generation of your immediate family to apply to Higher Education.
- Live in a geographical area with low levels of progression onto higher education.
- Currently live in or grew up in public or kinship care.
- Have had your studies disrupted or adversely affected by circumstances in your personal, social or domestic life.



- Attend, or have attended, a school which achieved below the national average Attainment 8 score at GCSE.
- Be from a household with a gross annual income of £25,000 or below. (You can demonstrate this in one of three ways:
 - If you receive the 16-19 Bursary Fund with an income threshold of £25,000 or below
 - If you received free school meals during your GCSE studies
 - If your parent or carer completes and submits a Declaration of Household Income Form, which can be found on our website.



How will RfE benefit me?



UNIVERSITY OF LEEDS

My confidence and communication skills have naturally been enhanced by RfE as interaction with new people is essential. The non-bias and honest opinions and advice given to me by the Leeds University students are what helped me to shape the direction of my future whilst studying in year twelve.

- **William**

RfE helped me decide which course I would like to study and I have also been shown that there are many opportunities at university and it is not just about getting a degree.

- **Amna**

THE | CONTEXTUAL | OUTREACH | TEAM



What do previous RfE students think?



UNIVERSITY OF LEEDS

Reach for Excellence is an excellent opportunity for every student so don't waste time in thinking a lot about it and apply for this excellent scheme as soon as possible!

- **Muhammad**

What are you waiting for? Do not hesitate, apply now! If you want to get the most out of your life, you have to grasp every chance you could possibly reach and Reach for Excellence is definitely one of them!

- **Yulin**

THE | CONTEXTUAL | OUTREACH | TEAM



Next Steps



UNIVERSITY OF LEEDS

Discuss with your teachers in school

Read Guidance Documents on our website

Complete our online application form



THE **CONTEXTUAL** **OUTREACH** **TEAM**



There are two questions you should pay particular attention to on the application form:

Applicant's Supporting Statements

Please refer to the Student Application Guidelines for more information about what we'd like to see from you in this section.

Why did you decide to apply to Reach for Excellence and how do you think it will benefit you? * *Required*

Please tell us about your wider interests and any extra-curricular activities you have taken part in (this might include hobbies, volunteering, work experience and any additional responsibilities in school or the community that you have done, or that you are hoping to try) * *Required*

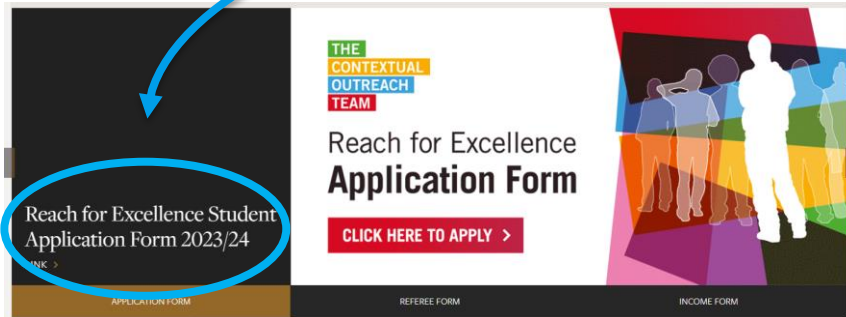


Next Steps



UNIVERSITY OF LEEDS

- **Online Application**
- **Thursday 16th November**
- **23:59**
- **Referee**



RfE Apply 2023

The 2023/24 Reach for Excellence application guidance documents can be found below, it is essential that all applicants read these before submitting an application.

[Student Application Guidelines](#)

[Teacher Application Guidelines](#)

[RfE Poster](#)

[RfE Leaflet](#)

Applications open at 9am, Friday 15th September 2023 and close at 23:59, Thursday 16th November 2023

You will also need to make your teacher in school, who you have chosen to act as your referee, aware that you are applying as they will be contacted before any decision is made on your eligibility for the scheme. Applicants who have submitted applications to the scheme can expect to find out if they have been successful in gaining a place mid December 2023. The Reach for Excellence Programme for successful applicants will then commence with our Induction Day on Saturday 27th January 2024.

Applicants should read our RfE Data Processing & Privacy Notice before signing and confirming to our conditions during the application process.

Reach for Excellence Application Form 2023/24 Entry

[Reach for Excellence Student Application Form 2023/23](#)

[Referee Confirmation Form 2022/23](#)
(for Teachers, Tutors and Careers Advisers who are supporting student applications)

[Declaration of Household Income Form 2022-23](#)
(for Parents of applicants who believe they meet the criterion of being from a household with a gross annual income of £25,000 or below)

If you require it for your application, please download our Declaration of Household income form. If you use assistive technology (such as a screen reader), there is an accessible version of the Reach for Excellence Declaration of household income form available to download. Please only use this version if you have accessibility requirements.

[Online Postcode Checker](#)

(this online postcode search can be used to find out whether you meet the geographical requirement of "Living in an area with low levels of progression on to Higher Education")

<https://contextualoutreach.leeds.ac.uk>

THE CONTEXTUAL OUTREACH TEAM





UNIVERSITY OF LEEDS

Thank You!

Any Questions?

THE **CONTEXTUAL** **OUTREACH** **TEAM**

